

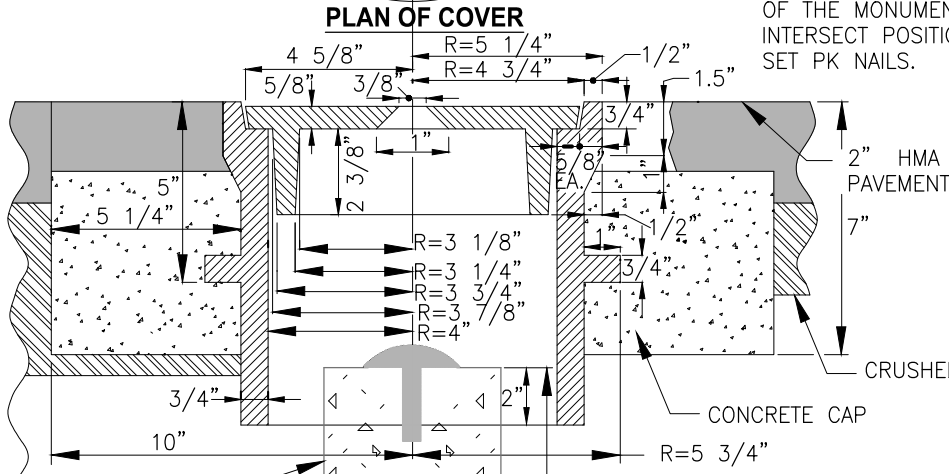
**BRASS DISC**

STRADDLES, A STRING-LINE INTERSECTION OF THE MONUMENT INTERSECT POSITION AND SET PK NAILS.

**TOP VIEW**

**NOTES:**

1. THE HOLE FOR THE MONUMENT SHALL BE CUT AFTER THE NEW PAVEMENT HAS BEEN CONSTRUCTED. THE UPPER 8" OF THE MONUMENT ENCASEMENT SHALL BE SHAPED TO A TRUE DIAMETER OF 8". THE BRASS DISC WILL BE SET DURING THE PLACEMENT OF THE CONCRETE.
2. MONUMENT CORE MATERIAL SHALL MEET OR EXCEED "RAPID SET NON-SHRINK, NON-METALLIC GROUT" OR CORED AND APPROVED EQUAL. THE HOLE SHALL BE 24" MIN. IN DEPTH. ALL LOOSE MATERIAL SHALL BE REMOVED FROM THE BOTTOM OF THE HOLE. THE CONCRETE SHALL BE PLACED ON FIRM UNDISTURBED EARTH. THE TOP OF THE CONCRETE SHALL BE TROWELED SMOOTH AND THE BRASS DISC SHALL BE CENTERED AND SLIGHTLY BELOW GRADE TO PREVENT DAMAGE. THE REBAR SHALL CENTERED BENEATH THE BRASS DISC USING THE STRADDLES. BRASS DISC SHALL BE MARKED BY AN "X" AT THE INTERSECT
3. LOCATION, AND IDENTIFIED, AS REQUIRED BY RCW TITLE 58.09.120.
4. THE REQUIREMENTS OF CHAPTER 332.120 WAC SHALL BE MET FOR THE REMOVAL OR DESTRUCTION OF A SURVEY MONUMENT.



SEAL ASPHALT TO CONCRETE WITH TAR BEAD.

FINISHED GRADE OF PAVEMENT

**NOTES:**

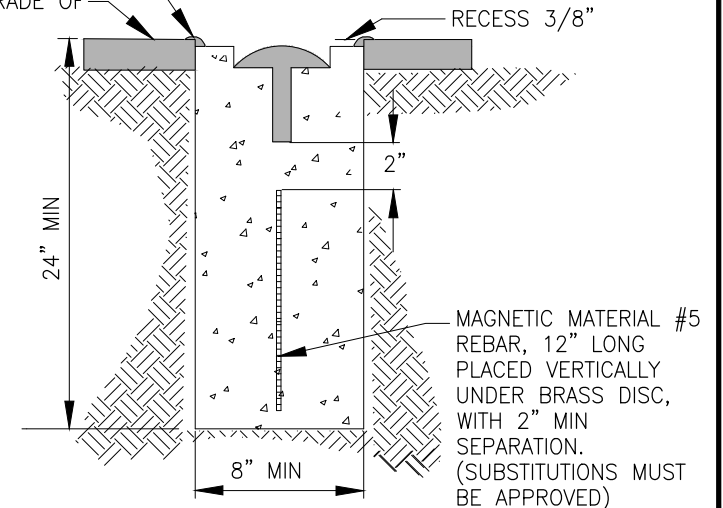
- 1A. CASTINGS SHALL BE GRAY IRON ASTM A48, AASHTO M 105, CLASS 30.
- 2A. COVER AND SEAT SHALL BE MACHINED FOR PERFECT CONTACT AROUND CIRCUMFERENCE AND FULL WIDTH OF BEARING SURFACE.
- 3A. CONCRETE SHALL BE CLASS 4000.
- 4A. THE UPPER 8" OF OF THE MONUMENT ENCASEMENT SHALL BE SHAPED TO A TRUE DIAMETER OF 5". THE BRASS DISC WILL BE SET DURING THE PLACEMENT OF THE CONCRETE.

MAGNETIC MATERIAL #5 REBAR, 12" LONG PLACED VERTICALLY UNDER BRASS DISC, WITH 2" MIN SEPARATION. (SUBSTITUTIONS MUST BE APPROVED)

CONCRETE MONUMENT

**SECTION A-A**

**SURVEY MONUMENT WITH CASE AND COVER FOR ALL STREETS**



**CAST IN PLACE MONUMENT FOR LOCAL ROADWAYS ONLY**

NOT TO SCALE



**CITY OF DES MOINES  
PUBLIC WORKS DEPARTMENT**

ENGINEERING SERVICES  
21650 11TH AVENUE SOUTH  
DES MOINES, IA 50319



**STANDARD MONUMENT CASE AND COVER**

**DM.F1.1**

REVISED: 02/23